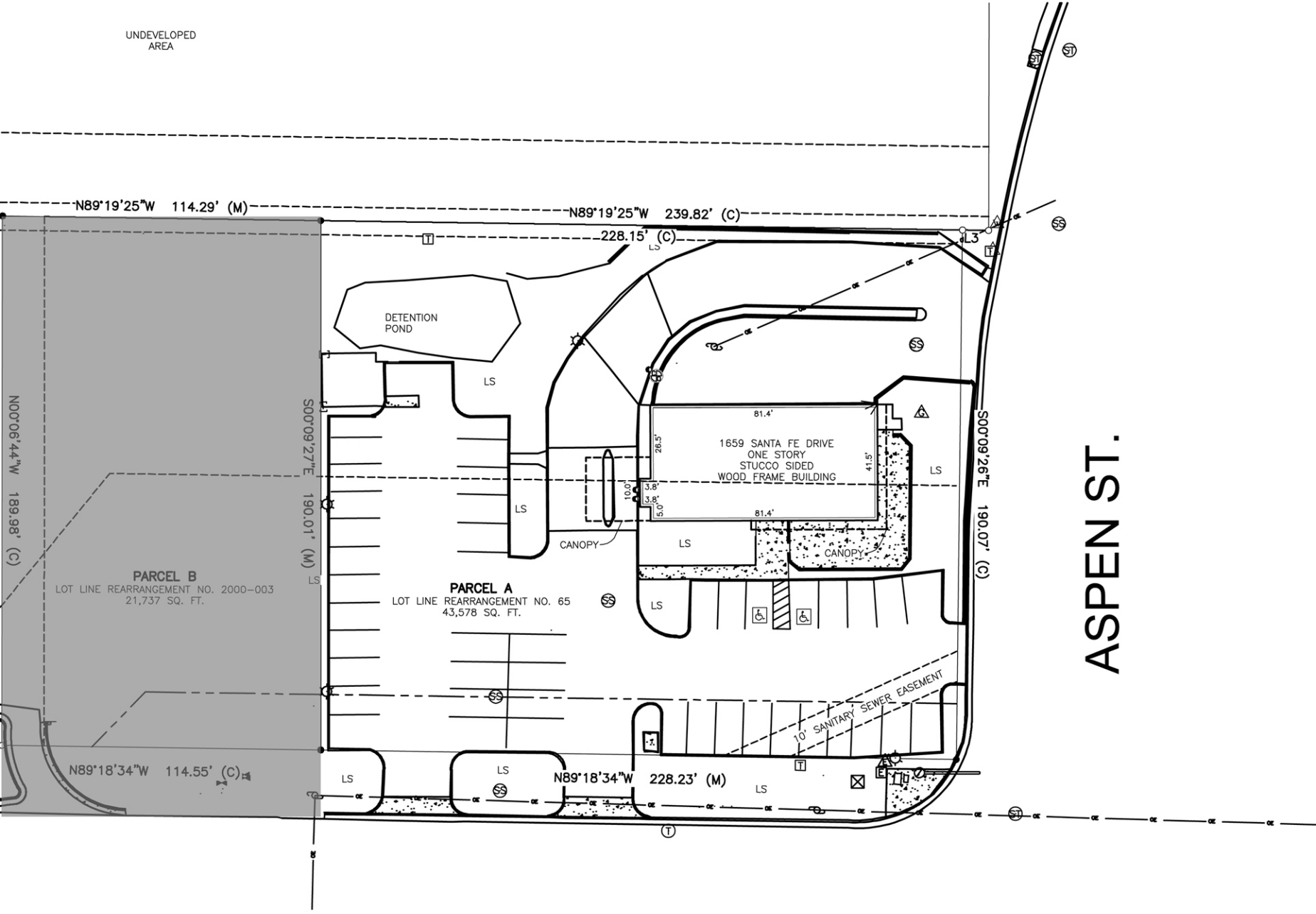


UNDEVELOPED  
AREA



ASPEN ST.

SANTA FE DR (HWY 50)



1

CONCEPTUAL SITE PLAN

SCALE: 1" = 20' (22 X 34) OR 1" = 40' (11 X 17)

Existing Building  
Santa Fe Dr & Aspen St  
Pueblo, CO  
Realm Realty  
900 Town & Country Ln #210

ALL RIGHTS ARE RESERVED  
NO PART OF THIS DOCUMENT  
OR THE INFORMATION CONTAINED  
HEREIN MAY BE REPRODUCED  
OR TRANSMITTED IN ANY FORM  
OR BY ANY MEANS, ELECTRONIC  
OR MECHANICAL, INCLUDING  
PHOTOCOPYING, RECORDING,  
OR BY ANY INFORMATION  
STORAGE AND RETRIEVAL  
SYSTEM, WITHOUT PERMISSION  
IN WRITING FROM REALM  
REALTY

PRINT RECORD  
PURPOSE DATE

REVISION RECORD

NO.	CHANGE	DATE

DRAWN SWG  
CHECKED SWG  
DATE 09/22/14

SHEET TITLE  
CONCEPTUAL  
SITE PLAN

REALM  
REALTY



900 Town & Country Lane Suite 210 Fountain, Texas 77224 (713) 468-0001

SHEET	OF
SP-1R	TOTAL