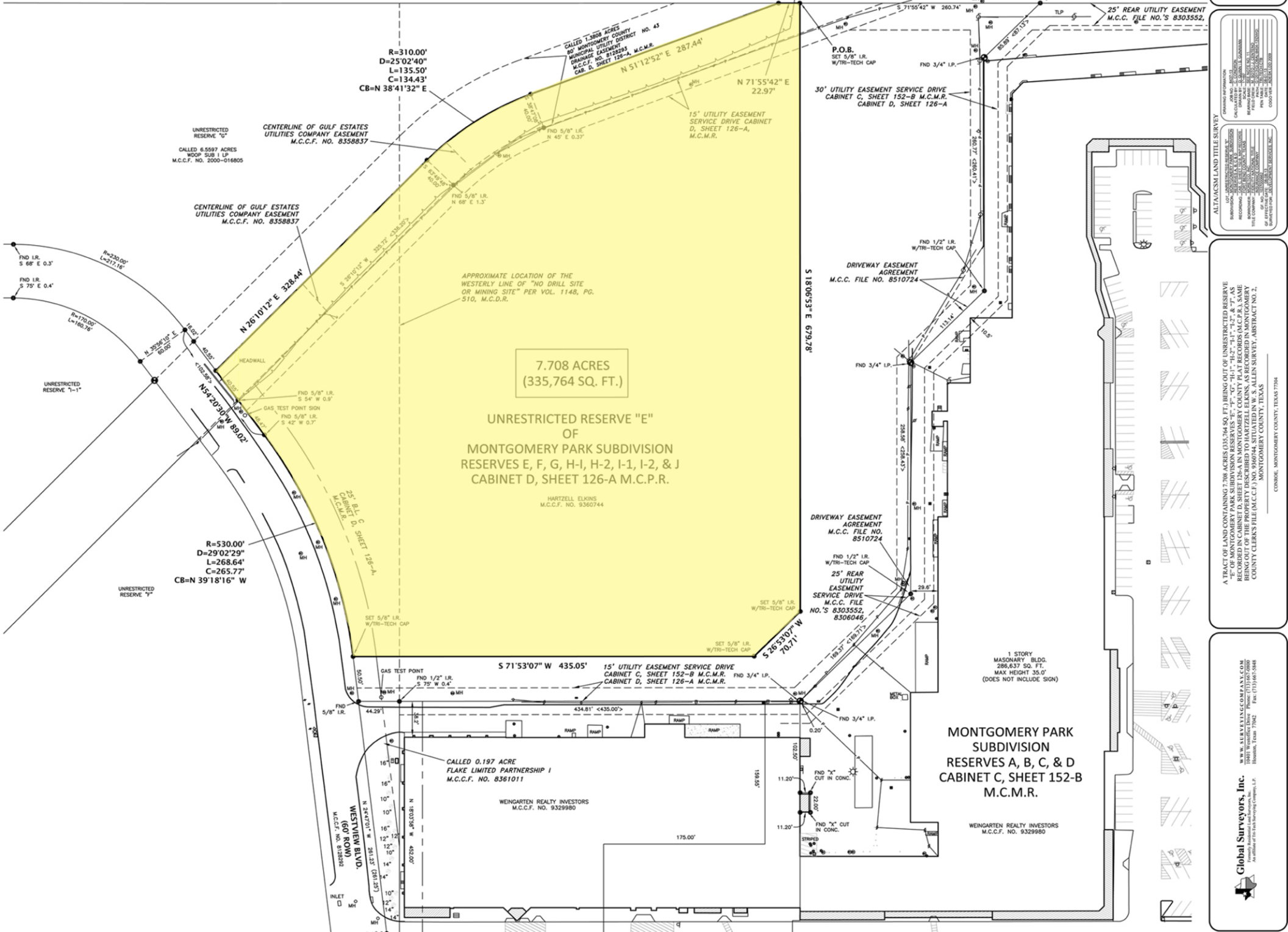


GRATE INLET	LIGHT STANDARD	IRON FENCE	POWER POLE	CONCRETE	CONTROLLING MONUMENT (8-2-13)	CHU = OVERHEAD UTILITIES	BL = BUILDING LINE	FND = FOUND	FOS = FIBER OPTIC SIGN	GOS = GASLINE OUT OF SERVICE	NO.	DATE	REASON	BY
SIgn	WATER VALVE	WOOD FENCE	GUY ANCHOR	COVERED	CALL	UE = UTILITY EASEMENT	PL = BOUNDARY LINE	IR = IRON ROD	ATT = ATTACH SIGN	TLP = TRAFFIC LIGHT POST				
MANHOLE	CLEAN OUT	POWER LINE	WATER METER	CALL	CHAIN LINK FENCE	AE = AERIAL EASEMENT	PP = POWER POLE	LP = IRON PIPE	FOG = FIBER OPTIC CABLE	TSSB = TRAFFIC SIGNAL BOX				
BOLLARD			ELECTRIC BOX	FIRE HYDRANT	TELEPHONE PEDESTAL	WLE = WATERLINE EASEMENT	MH = MANHOLE	FNC = FENCE	CP = CABLE PEDESTAL					
						STM MH = STORM SEWER MANHOLE	SAN MH = SANITARY SEWER MANHOLE	R.C.P. = REINFORCED CONCRETE PIPE	P.V.C. = POLYVINYL CHLORIDE PIPE					

COMMON ABBREVIATIONS		REVISIONS	



7.708 ACRES
(335,764 SQ. FT.)

UNRESTRICTED RESERVE "E"
OF
MONTGOMERY PARK SUBDIVISION
RESERVES E, F, G, H-1, H-2, I-1, I-2, & J
CABINET D, SHEET 126-A M.C.P.R.

HARTZELL ELKINS
M.C.C.F. NO. 9360744

MONTGOMERY PARK
SUBDIVISION
RESERVES A, B, C, & D
CABINET C, SHEET 152-B
M.C.M.R.

WEINGARTEN REALTY INVESTORS
M.C.C.F. NO. 9329980

WEINGARTEN REALTY INVESTORS
M.C.C.F. NO. 9329980

UNRESTRICTED RESERVE "G"
CALLED 6.5597 ACRES
WOOP SUB I LP
M.C.C.F. NO. 2000-016805

CENTERLINE OF GULF ESTATES
UTILITIES COMPANY EASEMENT
M.C.C.F. NO. 8358837

CENTERLINE OF GULF ESTATES
UTILITIES COMPANY EASEMENT
M.C.C.F. NO. 8358837

UNRESTRICTED RESERVE "I"
R=530.00'
D=2902'29"
L=268.64'
C=265.77'
CB=N 39'18'16" W

DRIVEWAY EASEMENT
AGREEMENT
M.C.C. FILE NO. 8510724

DRIVEWAY EASEMENT
AGREEMENT
M.C.C. FILE NO. 8510724

25' REAR
UTILITY
EASEMENT
SERVICE DRIVE
M.C.C. FILE
NO.'S 8303552,
8306046

1 STORY
MASONRY BLDG.
286,637 SQ. FT.
MAX HEIGHT 35.0'
(DOES NOT INCLUDE SIGN)

ALTAACSM LAND TITLE SURVEY
RECORDS INFORMATION
CALCULATED BY: J. W. WILSON
DATE: 08/11/2020
PROJECT: MONTGOMERY PARK SUBDIVISION
SHEET: 152-B
FILE NO.: 8303552
JOB NO.: 2000-016805
DRAWN BY: J. W. WILSON
CHECKED BY: J. W. WILSON
SCALE: AS SHOWN
DATE PLOTTED: 08/11/2020
CADD FILE: 2020-08-11-10-20-00

A TRACT OF LAND CONTAINING 7.708 ACRES (335,764 SQ. FT.) BEING OUT OF UNRESTRICTED RESERVE "E" OF MONTGOMERY PARK SUBDIVISION RESERVES "E", "F", "G", "H-1", "H-2", "I-1", "I-2", & "J" AS BEING OUT OF THE PROPERTY DESCRIBED TO HARTZELL ELKINS AS RECORDED IN MONTGOMERY COUNTY CLERK'S FILE M.C.C.F. NO. 9360744, SITUATED IN W.S. ALLEN SURVEY, ABSTRACT NO. 2, MONTGOMERY COUNTY, TEXAS

W.W. SURVEYING COMPANY, INC.
A Division of The Tech Surveying Company, L.P.
Houston, Texas 77062
Tel: (713) 667-5448

Global Surveyors, Inc.
A Division of The Tech Surveying Company, L.P.
Houston, Texas 77062
Tel: (713) 667-5448

